



CULT EQUIPMENT
MOTORCYCLES

BMW R 1300 GS

QUICK ASSEMBLY GUIDE | **REAR RACK COMBO**

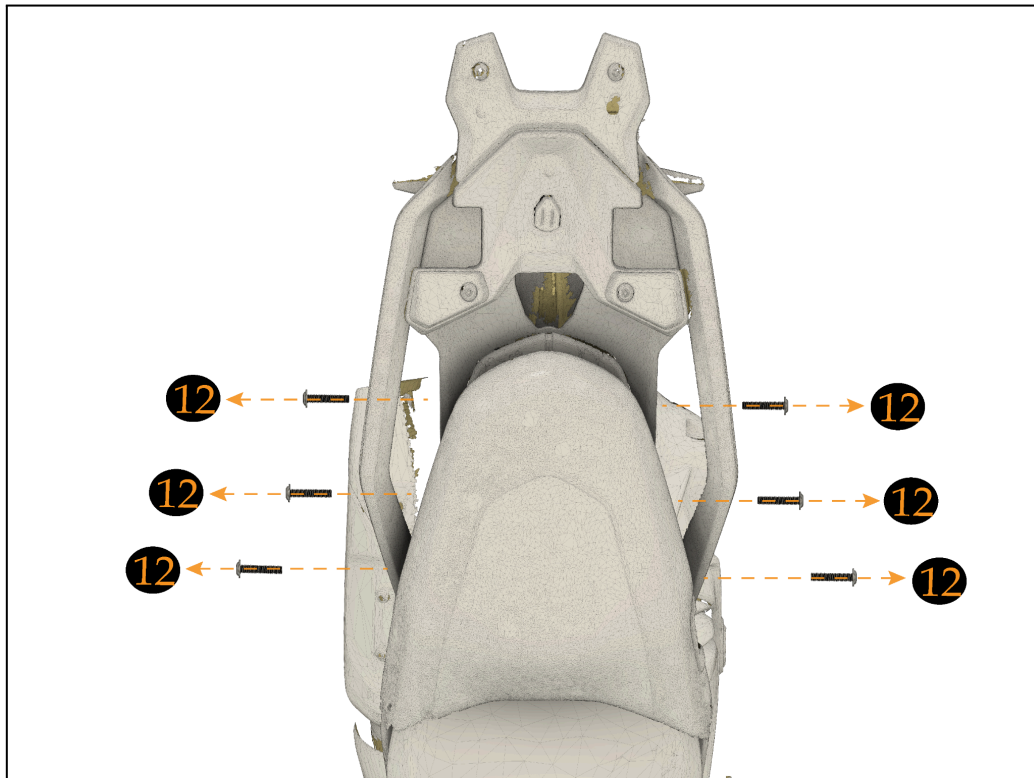
Tools Required

- ☐ 10mm Wrench/Spanner
- ☐ Ratchet + Extension
- ☐ 6mm Allen Socket
- ☐ T40 Torx Socket
- ☐ Blue Loctite (recommended)

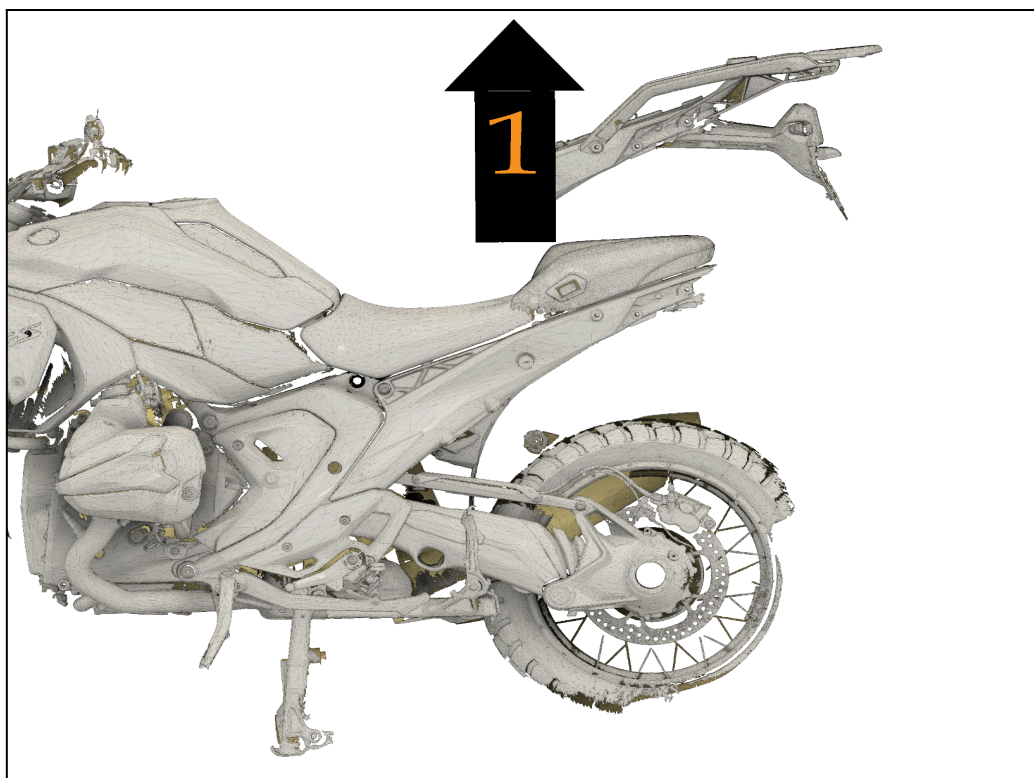
Number	QTY	Specifications	Torque (NM)
<u>1</u>	2	M8 x 65mm Allen Bolt	*
<u>2</u>	2	M8 x 30mm Allen Bolt	*
<u>3</u>	2	M8 x 20mm Allen Bolt	
<u>4</u>	4	M8 x 20mm Tapered Allen Bolt	23
<u>5</u>	4	M6 x 20mm Tapered Allen Bolt	10
<u>6</u>	10	M8 Washer	-
<u>7</u>	4	M8 Nyloc Nut	-
<u>8</u>	4	M6 Washer	-
<u>9</u>	4	M6 Nyloc Nut	-
<u>10</u>	2	Long Spacer	-
<u>11</u>	2	Short Spacer	-
<u>12</u>	6	OEM Hardware	-

* PLEASE REFER TO THE OWNER'S (OR SERVICE) MANUAL FOR OEM TORQUE SPECIFICATIONS.*

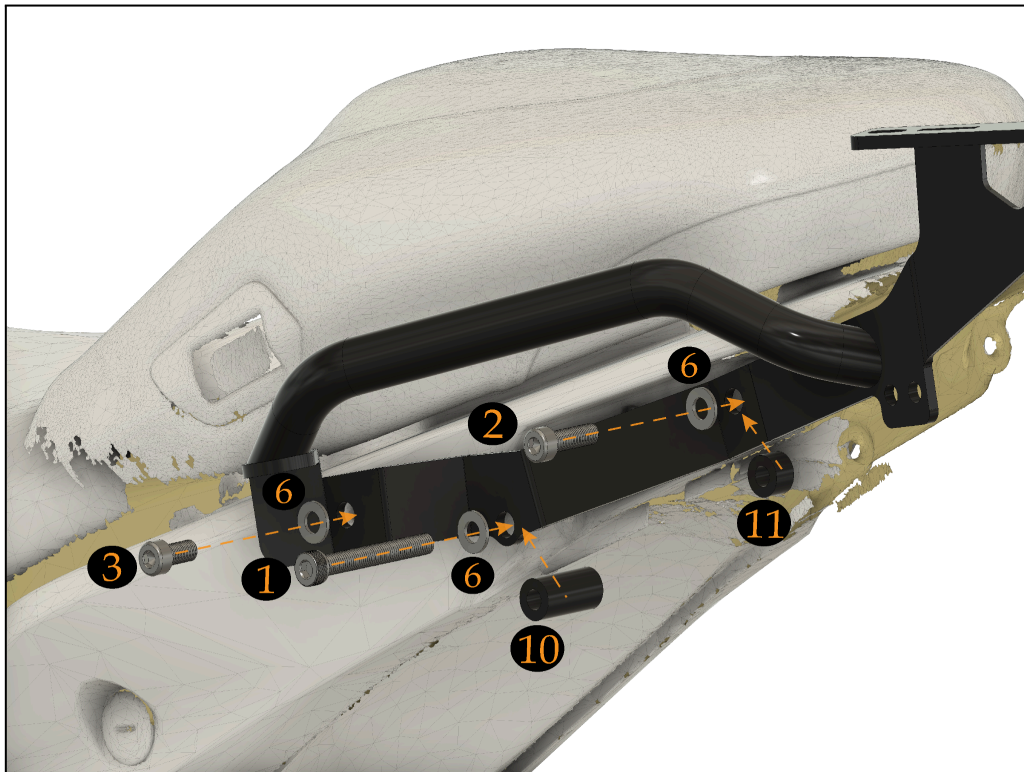
STEP 1:



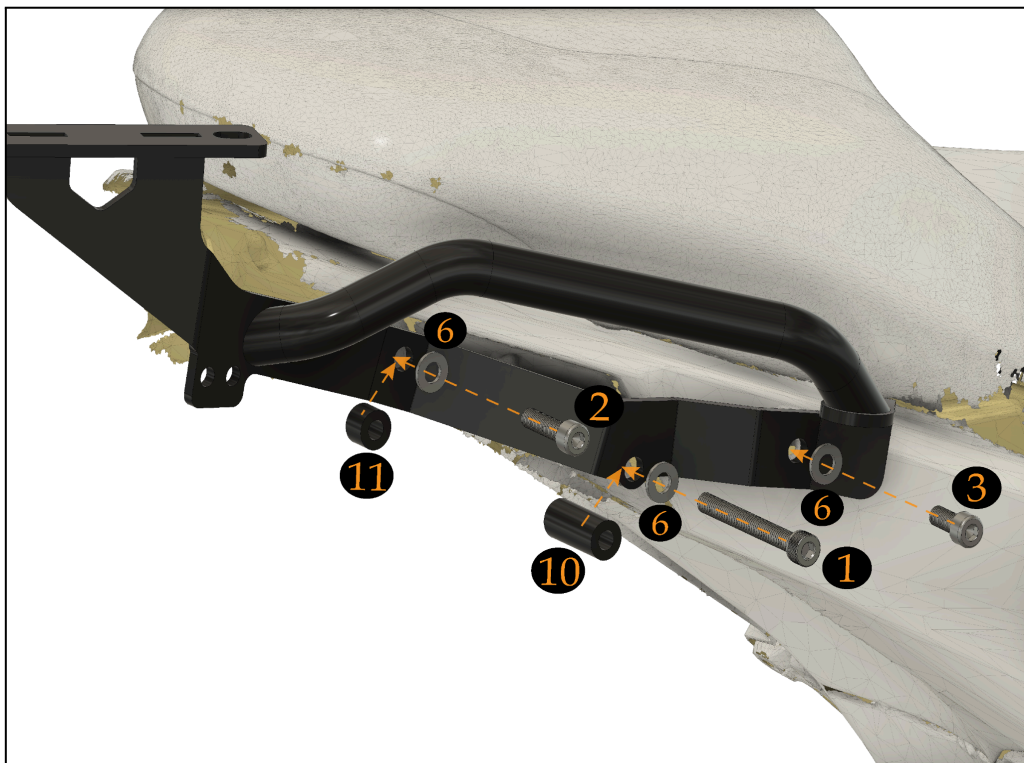
STEP 2:



STEP 3:



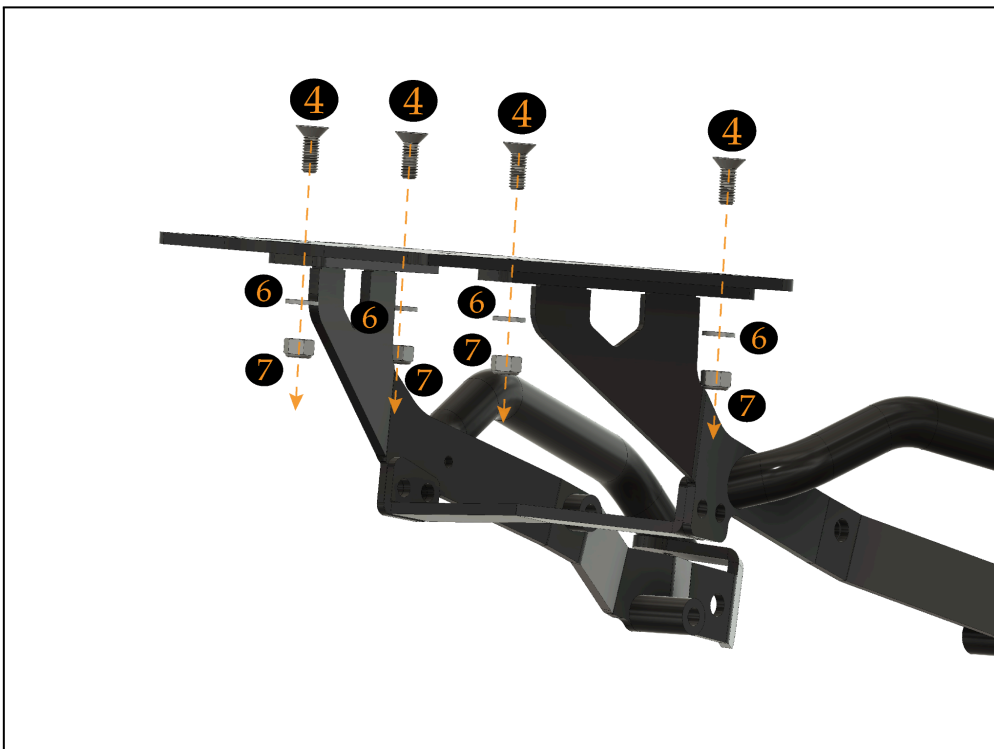
STEP 4:



STEP 5:



STEP 6:



* Torque Disclaimer *

Torque specs provided by Outback Motortek are for guidance only and may reference OEM data. Incorrect torque application from miscalibrated or improperly stored torque wrenches (which can drift by up to 20% within 12 months) may cause broken studs or mounting failures. Always return torque wrenches to 0 ft-lbs when storing, and use blue Loctite (medium strength) on all fasteners to help prevent loosening. Outback Motortek is not responsible for damage or failures caused by mis-torquing or improper installation.